

BLOCK 13, SECTION 102 - NORTH WATSON

LOW WATER USE ZONE

Plants include:

Carex appressa, Lomandra longifolia 'Tanika', Pennisetum 'Nafray', Festuca glauca, Juncus usiatus & Dianella 'Little Rev'

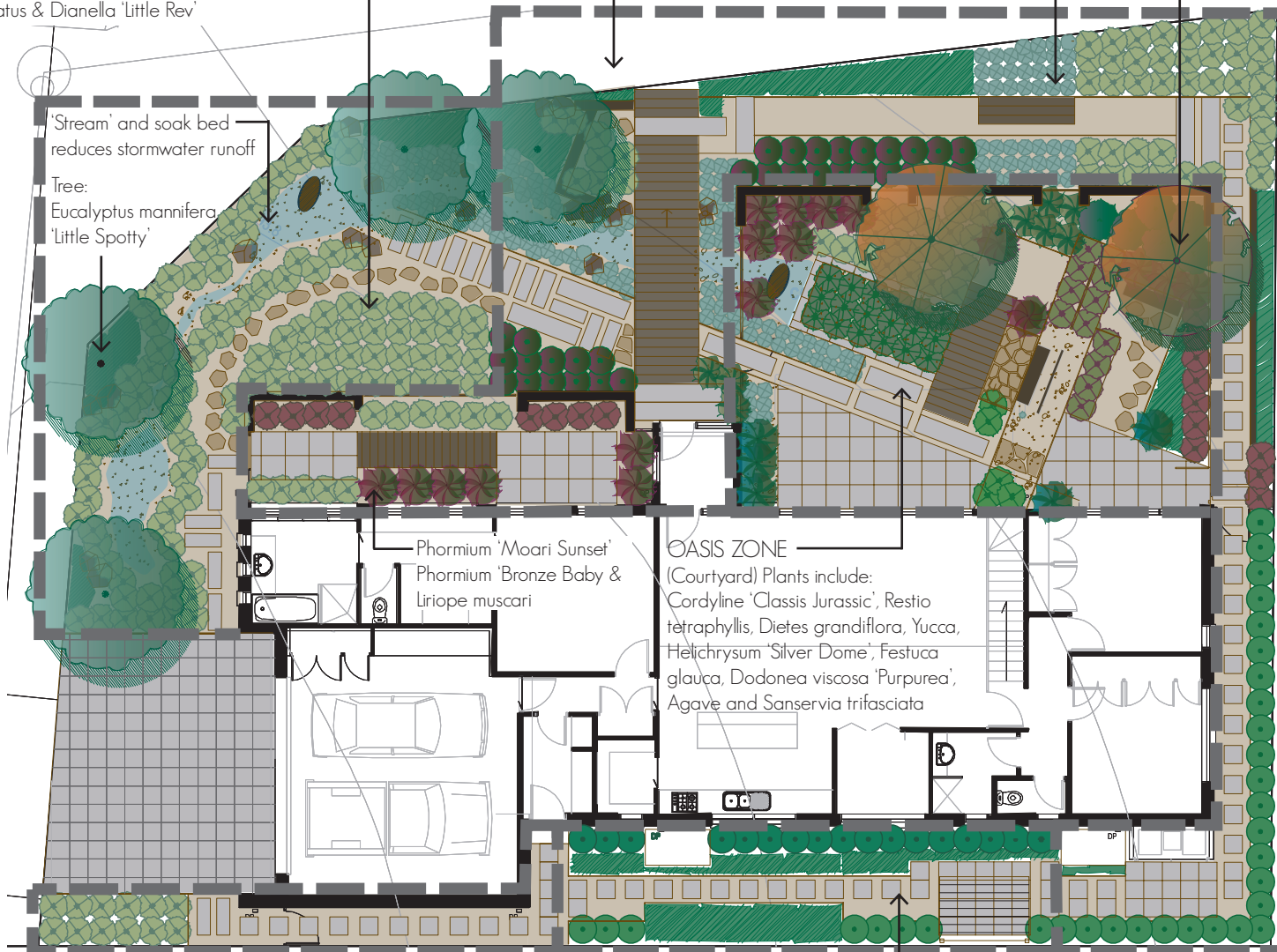
TRANSITION ZONE

Plants include:

Lomandra 'filiformis CV Mondra, Festuca glauca, Dianella 'Little Rev', Pennisetum alopecuroides 'Nafray' and Lophomyrtus 'Black Stallion'

Courtyard Tree:

Pyrus betulaeifolia x P. calleryana 'Edgewood'



GARDEN THEME

The garden has a contemporary edge and relates strongly to the architecture.

Architectural elements continue into the garden with the use of recycled timber and 2-dimensional timber panels to divide spaces. Planting includes predominantly grasses and sculptural accent plants.

ECOLOGICALLY SUSTAINABLE DESIGN

The garden incorporates Ecologically Sustainable Design and Water Sensitive Urban Design measures including the use of 'Xeriscape' principles. The garden is divided into 'zones' depending on the water requirements of plants. Courtyard areas and the rear vegetable garden are in the 'Oasis Zone' and include higher water users. 'Transition Zones' include the front garden outside the courtyard walls, the area adjacent to the front path and the side garden and include plants that require less water. The 'Low Water Use Zone' includes the western part of the garden around the 'stream bed' and driveway area. Plants require little water, with the exception of plants surrounding soak beds. There are no areas of lawn, instead, low maintenance grasses and groundcovers have been used.

Recycled materials are utilised where possible and permeable paving systems assist stormwater infiltration. Timber, stone and concrete pavers set in decomposed granite allow water to percolate on-site. A 'stream bed' mimics a natural stream and channels water to soak beds, reducing stormwater runoff.

Designer:
J. Easthope and Associates
Unit 5, 97 Northbourne Avenue, Turner ACT 2612
Phone: (02) 62626363
jea@jea.com.au



Not To Scale



REAR YARD includes a vegetable garden and herb growing area. Other plants include: Dietes grandiflora, Eriostemum 'Profusion' and Dianella revoluta.