

# AILA CULTIVATE PRESENTS: URBAN FOOD PRODUCTION

EVENT 03

Please join us for the following presentations about the influence of productive landscapes on our urban environments. Discussions will cover big picture planning, education, community design and implementation.

## URBAN REFORESTATION

Dockland's Community Garden & Eco-Centre  
[www.urbanreforestation.com](http://www.urbanreforestation.com)

## TREVOR BUDGE

La Trobe University - Course Convenor of Community Planning & Development  
Presenting - The Food Security Program (partnership with VicHealth and the VLGA)  
[http://www.vlga.org.au/Projects\\_Campaigns/Climate\\_Change/Food\\_Security4.aspx](http://www.vlga.org.au/Projects_Campaigns/Climate_Change/Food_Security4.aspx)

## JANE SHEPHERD

RMIT - Lecturer, Architecture & Design  
Presenting - connection between educational and professional practice

## ANDREW PARTOS

VicUrban - Project Planning & Innovation  
Presenting - Meridian Development, Dandenong South  
[www.vicurban.com/meridian](http://www.vicurban.com/meridian)

Wednesday September 8th

5:45pm drinks, 6:00pm start @

Docklands Community Garden (see map below)

Other presentations to follow @

Urban Reforestation Eco-Centre

71 Merchant Street, Docklands

**Please RSVP by September 2nd:**  
[www.aila.org.au/pay](http://www.aila.org.au/pay)

Students \$5

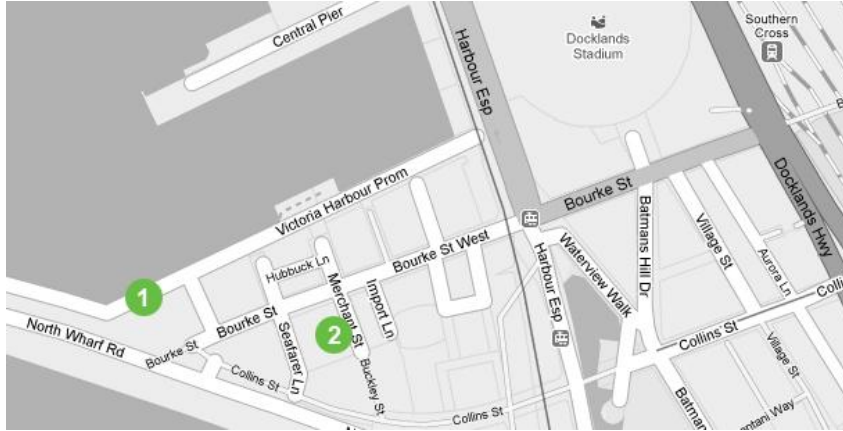
AILA & PIA Members \$25

Non Members \$40



Event is 3 CPD points for AILA members

## EVENT LOCATION DOCKLANDS



- 1 Docklands Community Garden is located at the end of Victoria Harbour Prom. Drinks start here at 5:45pm and the first speaker will begin at 6:00pm.
- 2 We will head back at 6:20pm to the URBAN REFORESTION Eco-Centre (71 Merchant Street) for the remaining presentations and an insight on Urban Reformation's *new* Eco Centre and Community Gardens.



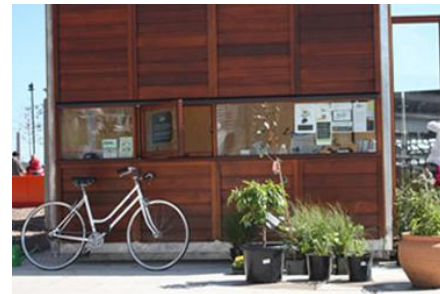
## URBAN REFORESTATION COMMUNITY GARDEN & ECO-CENTRE

URBAN REFORESTATION is a creative global campaign aiming to inspire urban farming for sustainability and food security, starting in metropolitan Melbourne.

The design considers the current site in Victoria Harbour as well as identifies areas for 'Urban Reformation' beyond the site boundary both within Docklands and at other sites. The purpose of the Urban Reformation project is to provide integrated place combined with educational experience on everyday sustainable practices in a manner that's accessible to everyone.

## TREVOR BUDGE PLANNING & FOOD SECURITY

Trevor Budge is Senior Lecturer at La Trobe University and a past president of PIA (Planning Institute Australia). His presentation will cover how land-use planning can influence food security. Trevor is a geographer-planner, widely acknowledged for his work in integrating land-use planning with natural resource management plans and strategies. He has previously worked with the VLGA (Victorian Local Governance Association) on food security and has presented at the *Food for All – Making a Difference Forum* by VicHealth this past June.



## JANE SHEPHERD RMIT – EDUCATION PERSPECTIVE



Jane Shepherd is a lecturer in Landscape Architecture at RMIT. She has a demonstrated commitment to the direct connection between educational and professional practice. Much of her project work at RMIT has been of an interdisciplinary nature across a wide range of urban design and landscape architecture issues with an emphasis on testing the possibilities for 'sustainability' in the contemporary city.



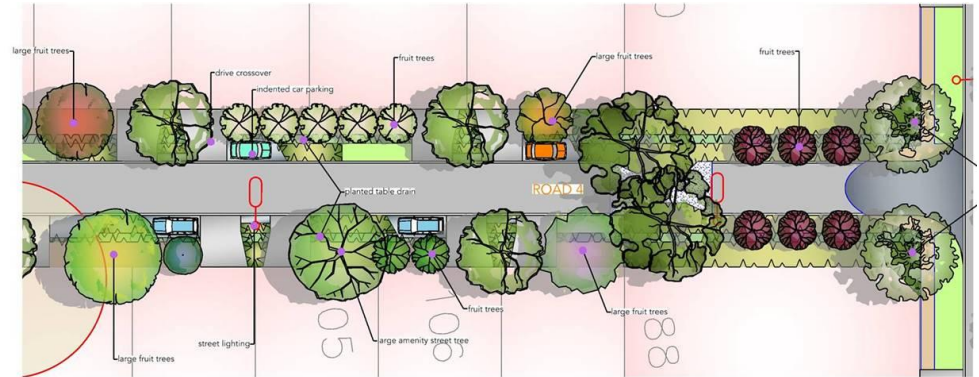
## ANDREW PARTOS MERIDIAN – URBAN ORCHARD

Meridian, a new four hundred dwelling residential development on former Melbourne Water land in Dandenong, features urban orchards and community gardens.

Introducing fruit trees to a new suburban development makes a lot of environmental sense. Making it happen is much more challenging. It involves implementing a host of custom built solutions to everything from water management to fruit harvesting.

VicUrban with Wallbrink Landscape Architects have methodically worked through a maze of issues with the various authorities to create a truly innovative new residential development.

Andrew Partos from VicUrban will provide some insight into these issues and discuss some of the design strategies adopted to address them.



typical landscape plan  
1:200 shared pedestrian zone - road 4